



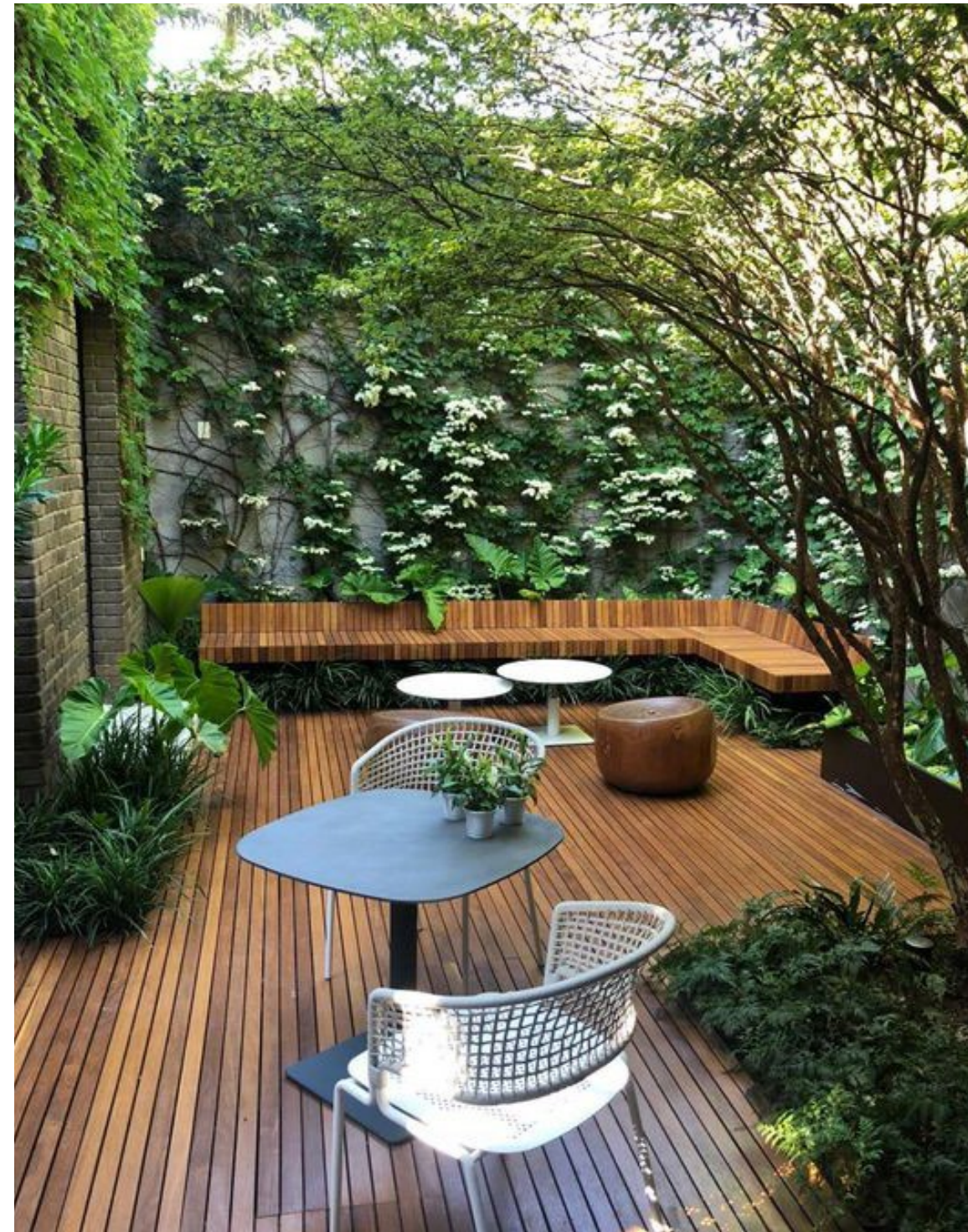
<i>PRECEDENTS</i>	L101
<i>LANDSCAPE CONCEPT PLAN</i>	L102
<i>PLANTING PLAN</i>	L103
<i>PLANTING STRATEGY & SCHEDULE</i>	L104



LANDSCAPE CONCEPT DESIGN PACKAGE
14 INGRAM ROAD, REMUERA

JULY 2020
113362

SURFACING MATERIAL

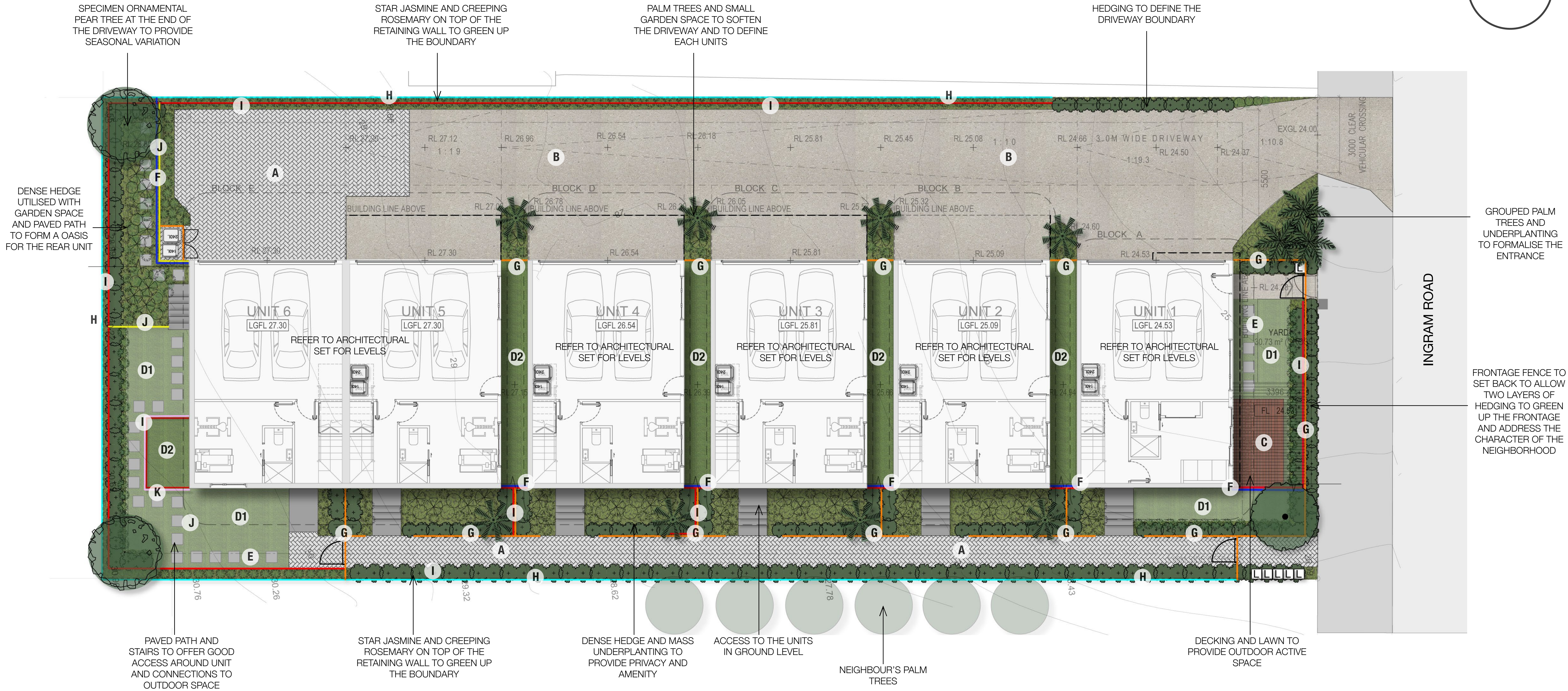
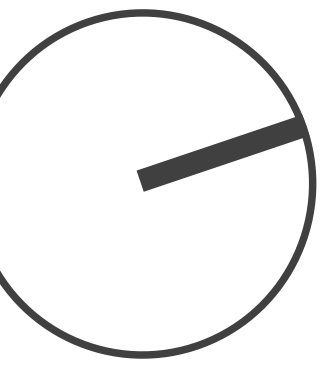


PRIVATE OASIS

LAYERING



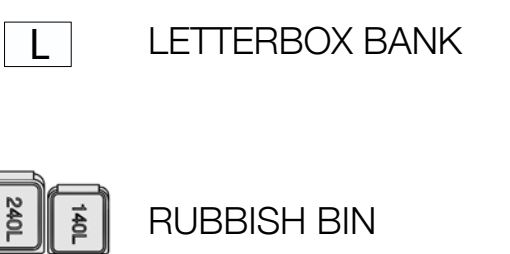
LANDSCAPE DESIGN

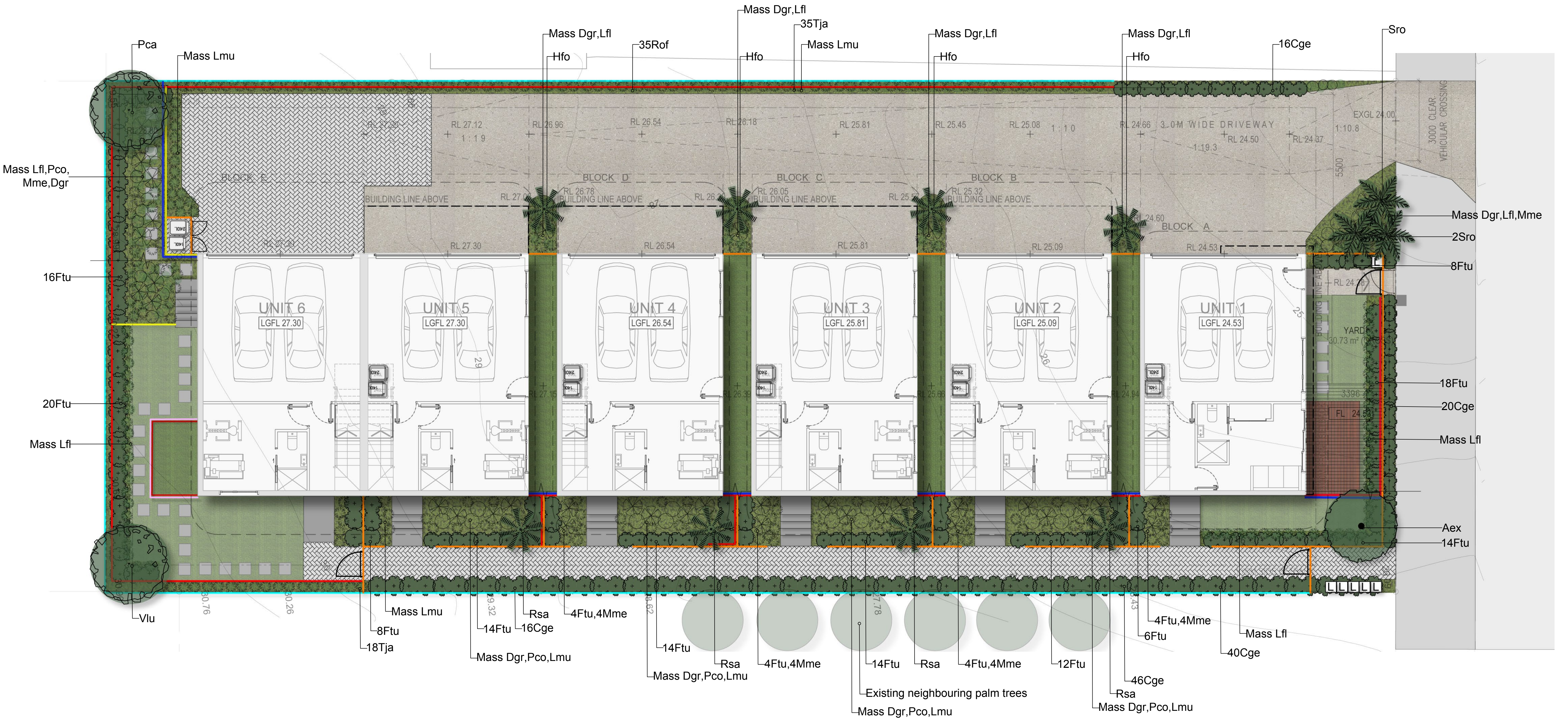
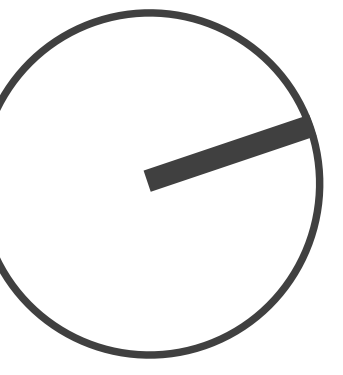


MATERIAL PALETTE



LEGEND





Titoki (Aex)

Puriri (Mu)

Ornamental pear (Pca)

Kentia palm (Hfo)

Queen palm (Sro)

Nikau palm (Rsa)

Corokia (Cge)

Ficus hedge (Ftu)

NOTES:

- IF TREES SPECIES ARE NOT AVAILABLE, SIMILAR SPECIES MAY BE USED (CHANGES TO SPECIES MUST BE ACCEPTED BY SOLA LANDSCAPE ARCHITECT).
- ALL GARDEN AREAS TO HAVE 300MM DEPTH QUALITY TOPSOIL AND 100MM DECORATIVE BARK MULCH UNLESS OTHERWISE STATED.
- 36 MONTH MAINTENANCE TO BE INCLUDED FOR ALL COMMON LANDSCAPE AREAS AT THE COMPLETION OF LANDSCAPE CONSTRUCTION.



Common Area Planting

The planting design is focused on providing high quality landscaping to compliment the architecture and address the existing suburban character in order to offer inviting experience to the future residents. The common space planting has been designed to soften and green up the concrete dominated driveway.

Group planted palm trees and mass lush underplanting at the beginning of the shared driveway to formalise the entrance. Dense hedging along the boundary provides amenity to the development as well as privacy to the residents.

Private Space Planting

The planting strategy for the private space utilises both building structures and plant forms to create a lush and contemporary appearance. Due to the limited outdoor space, decking area, lawn and paved path utilised with mass underplanting to provide quality private spaces.

Dense hedging such as ficus and corokia, specimen trees such as puriri, titoki, palm trees and mass underplanting provide a indoor-outdoor flow and private oasis. The planting design is low maintenance with easy care hedging with mass planting of underplanting and evergreen shrubs, which will anchor the site and buffer the neighbouring properties.



Titoki (Aex)

Puriri (Vlu)

Ornamental pear (Pca)

Kentia palm (Hfo)



Queen palm (Sro)

Nikau palm (Rsa)

Corokia (Cge)

Ficus hedge (Ftu)



Lomandra shara (Lfi)

Dwarf flax (Pco)

Fairy iris (Dgr)

Liriope 'Monroe white' (Lmo)



Star jasmine (Tja)

Three kings kawakawa (Mma)

Creeping rosemary (Rof)

14 INGRAM ROAD, REMUERA COMMON AND PRIVATE AREA						
Code	Botanical Name	Common Name	Notes	Spacing	Quantity/ Percentage mix	Size
Trees						
Aex	<i>Alextryon excelsus</i>	Titoki	Specimen tree	As Shown	1	45L
Rsa	<i>Rhopalostylis sapida</i>	Nikau	Specimen palm tree	As Shown	4	25L
Vlu	<i>Vitex lucens</i>	Puriri	Specimen tree	As shown	1	65L
Hfo	<i>Howea forsteriana</i>	Kentia palm	Specimen palm tree	As shown	4	25L
Sro	<i>Syagrus romanzoffiana</i>	Queen palm	Specimen palm tree	As shown	3	25L
Pca	<i>Pyrus calleryana 'Aristocrat'</i>	Ornamental Pear	Specimen tree	As Shown	1	65L
Hedge Plants						
Ftu	<i>Ficus Tuffy</i>	Ficus Tuffy	Specimen hedge	500	140	10L
Cge	<i>Corokia 'Geentys Green'</i>	Corokia	Formalised Hedging	500	92	10L
Understory Planting						
Pco	<i>Phormium cookianum 'emerald green'</i>	Dwarf Flax	Grouped planting	800	As required	2L
Lmu	<i>Liriope muscari 'Monroe white'</i>	Liriope 'Monroe white'	Grouped planting	350	As required	2L
Mme	<i>Macropiper melchior</i>	Three kings kawakawa	Grouped planting	500	As required	5L
Lfi	<i>Lomandra fluviatilis Shara</i>	Lomandra Shara	Grouped planting	500	As required	2L
Dgr	<i>Dietes grandiflora</i>	Fairy Iris	Grouped planting	500	As required	2L
Tja	<i>Trachelospermum jasminoides</i>	Star Jasmine	Ground cover	600	53	5L
Rof	<i>Rosmarinus officinalis 'Prostratus'</i>	Creeping Rosemary	Ground cover	500	53	5L

NOTES:

1. IF TREES SPECIES ARE NOT AVAILABLE, SIMILAR SPECIES MAY BE USED (CHANGES TO SPECIES MUST BE ACCEPTED BY SOLA LANDSCAPE ARCHITECT).
2. ALL GARDEN AREAS TO HAVE 300MM DEPTH QUALITY TOPSOIL AND 100MM DECORATIVE BARK MULCH UNLESS OTHERWISE STATED.
3. 36 MONTH MAINTENANCE TO BE INCLUDED FOR ALL COMMON LANDSCAPE AREAS AT THE COMPLETION OF LANDSCAPE CONSTRUCTION.