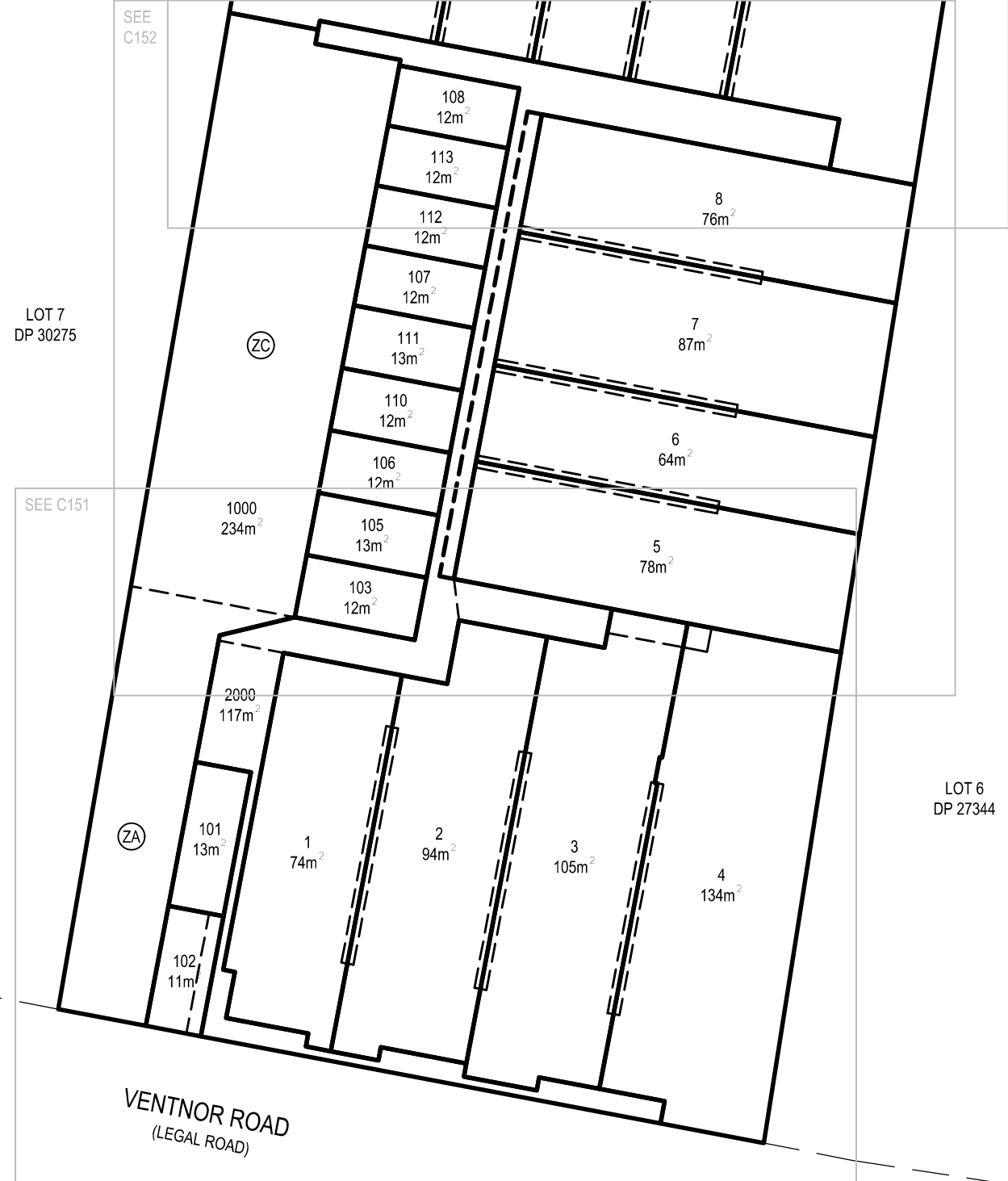




SEE C153

LOT 8
DP 193345



LOT 7
DP 30275

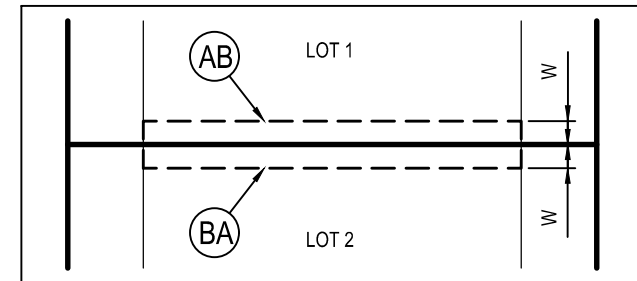
LOT 6
DP 27344

VENTNOR ROAD
(LEGAL ROAD)

MEMORANDUM OF EASEMENTS			
PURPOSE	SHOWN	BURDENED LAND	BENEFITED LAND
MAINTENANCE RIGHTS	(XA)	LOT 102 HERE ON	LOT 1 HERE ON
	(XB)	LOT 3 HERE ON	LOT 5 HERE ON
	(XC)	LOT 3 HERE ON	

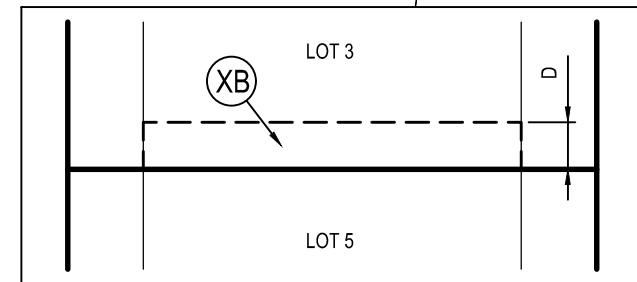
SCHEDULE OF EASEMENTS IN GROSS			
PURPOSE	SHOWN	BURDENED LAND	GRANTEE
RIGHT TO CONVEY TELECOMMUNICATIONS	(ZA)	LOT 1000 HERE ON	CHORUS NEW ZEALAND LIMITED
	(ZB)	LOT 2000 HERE ON	

W = WIDTH DETERMINED BY WIDTH OF PARTY WALL/STRUCTURAL SUPPORT



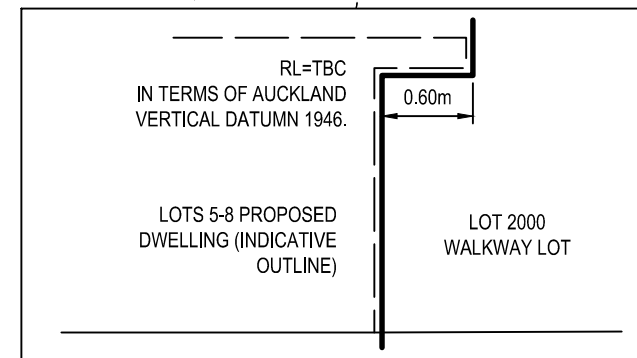
TYPICAL PARTY WALL EASEMENT DIAGRAM

D = DISTANCE OF MAINTENANCE EASEMENT IS 1.0m UNLESS STATED



TYPICAL MAINTENANCE EASEMENT DIAGRAM

LOT NUMBERS VARY, DIMENSIONS TBC AT TIME OF FINAL SURVEY



TYPICAL STRATUM BOUNDARY DIAGRAM

LOT 1-13, 100-103, 105-113, 1000 & 2000 BEING A PROPOSED SUBDIVISION OF LOT 8 DP 30275 COMPRISED IN RT NA743/141 TOTAL AREA: 1684m²

MEMORANDUM OF EASEMENTS			
PURPOSE	SHOWN	BURDENED LAND	BENEFITED LAND
PARTY WALL	(AB)	LOT 1 HERE ON	LOT 2 HERE ON
	(BA)	LOT 2 HERE ON	LOT 1 HERE ON
	(BC)	LOT 2 HERE ON	LOT 3 HERE ON
	(CB)	LOT 3 HERE ON	LOT 2 HERE ON
	(CD)	LOT 3 HERE ON	LOT 4 HERE ON
	(DC)	LOT 4 HERE ON	LOT 3 HERE ON
	(EF)	LOT 5 HERE ON	LOT 6 HERE ON
	(FE)	LOT 6 HERE ON	LOT 5 HERE ON
	(FG)	LOT 6 HERE ON	LOT 7 HERE ON
	(GF)	LOT 7 HERE ON	LOT 6 HERE ON
	(GH)	LOT 7 HERE ON	LOT 8 HERE ON
	(HG)	LOT 8 HERE ON	LOT 7 HERE ON
	(IJ)	LOT 9 HERE ON	LOT 10 HERE ON
	(JI)	LOT 10 HERE ON	LOT 9 HERE ON
	(JK)	LOT 10 HERE ON	LOT 11 HERE ON
	(KJ)	LOT 11 HERE ON	LOT 10 HERE ON
(KL)	LOT 11 HERE ON	LOT 12 HERE ON	
(LK)	LOT 12 HERE ON	LOT 11 HERE ON	
(LM)	LOT 12 HERE ON	LOT 13 HERE ON	
(ML)	LOT 13 HERE ON	LOT 12 HERE ON	
RIGHT OF WAY, SERVICES, DRAINAGE	(ZA) (ZC)	LOT 1000 HERE ON	LOTS 1-13 HERE ON

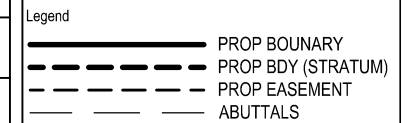
AMALGAMATION CONDITION

THAT LOT 1000 HEREON (LEGAL ACCESS) BE HELD AS TO THIRTEEN UNDIVIDED ONE-THIRTEENTH SHARES BY THE OWNERS OF LOTS 1-13 HEREON AS TENANTS IN COMMON IN THE SAID SHARES AND THAT INDIVIDUAL RECORDS OF TITLE BE ISSUED IN ACCORDANCE THEREWITH

THAT LOT 2000 HEREON (LEGAL ACCESS) BE HELD AS TO THIRTEEN UNDIVIDED ONE-THIRTEENTH SHARES BY THE OWNERS OF LOTS 1-13 HEREON AS TENANTS IN COMMON IN THE SAID SHARES AND THAT INDIVIDUAL RECORDS OF TITLE BE ISSUED IN ACCORDANCE THEREWITH

THAT LOT 1 AND LOT 101 BE HELD IN THE SAME RECORD OF TITLE
 THAT LOT 2 AND LOT 102 BE HELD IN THE SAME RECORD OF TITLE
 THAT LOT 3 AND LOT 103 BE HELD IN THE SAME RECORD OF TITLE
 THAT LOT 5 AND LOT 105 BE HELD IN THE SAME RECORD OF TITLE
 THAT LOT 6 AND LOT 106 BE HELD IN THE SAME RECORD OF TITLE
 THAT LOT 7 AND LOT 107 BE HELD IN THE SAME RECORD OF TITLE
 THAT LOT 8 AND LOT 108 BE HELD IN THE SAME RECORD OF TITLE
 THAT LOT 10 AND LOT 110 BE HELD IN THE SAME RECORD OF TITLE
 THAT LOT 11 AND LOT 111 BE HELD IN THE SAME RECORD OF TITLE
 THAT LOT 12 AND LOT 112 BE HELD IN THE SAME RECORD OF TITLE
 THAT LOT 13 AND LOT 113 BE HELD IN THE SAME RECORD OF TITLE

- Notes
- All works to be in accordance with Auckland council standards.
 - Co-ordinates in terms of NZ Geodetic Datum Mt Eden 2000
 - Levels in terms of the Auckland Vertical Datum 1946.
 - Origin of Levels = M 969 SO 48339 (CD4K) Published RL=43.14, sourced from The LINZ Digital Geodetic Database.
 - Boundaries are subject to final survey.



Rev	Description	By	Date
A	INITIAL ISSUE	RM	11/2020

Project
DEVELOPMENT OF 44 VENTNOR ROAD REMUERA ROAD FOR GIBBONS CO.

Title
PROPOSED SCHEME PLAN

Project no.	109012
Scale	1:250 @ A3
Cad file	C150 SCHEME.DWG
Drawing no.	C150
Rev	A

MEMORANDUM OF EASEMENTS			
PURPOSE	SHOWN	BURDENED LAND	BENEFITED LAND
PARTY WALL	(AB)	LOT 1 HERE ON	LOT 2 HERE ON
	(BA)	LOT 2 HERE ON	LOT 1 HERE ON
	(BC)	LOT 2 HERE ON	LOT 3 HERE ON
	(CB)	LOT 3 HERE ON	LOT 2 HERE ON
	(CD)	LOT 3 HERE ON	LOT 4 HERE ON
	(DC)	LOT 4 HERE ON	LOT 3 HERE ON



- Notes
- All works to be in accordance with Auckland council standards.
 - Co-ordinates in terms of NZ Geodetic Datum Mt Eden 2000
 - Levels in terms of the Auckland Vertical Datum 1946.
 - Origin of Levels = M 969 SO 48339 (CD4K) Published RL=43.14, sourced from The LINZ Digital Geodetic Database.
 - Boundaries are subject to final survey.

Legend

	PROP BOUNDARY
	PROP EASEMENT
	ABUTTALS

Rev	Description	By	Date
A	INITIAL ISSUE	RM	11/2020

Maven Associates
09 571 0050
info@maven.co.nz
www.maven.co.nz
12-14 Walls Road, Penrose

Project
**DEVELOPMENT OF
44 VENTNOR ROAD
REMUERA ROAD
FOR
GIBBONS CO.**

Title
**PROPOSED
SCHEME
PLAN**

Project no.	109012
Scale	1:100 @ A3
Cad file	C150 SCHEME.DWG
Drawing no.	C151
Rev	A

MEMORANDUM OF EASEMENTS			
PURPOSE	SHOWN	BURDENED LAND	BENEFITED LAND
MAINTENANCE RIGHTS	(XA)	LOT 102 HERE ON	LOT 1 HERE ON
	(XB)	LOT 3 HERE ON	LOT 5 HERE ON
	(XC)	LOT 4 HERE ON	

LOT 1-13, 100-103, 105-113, 1000 & 2000 BEING A PROPOSED SUBDIVISION OF LOT 8 DP 30275 COMPRISED IN RT NA743/141 TOTAL AREA: 1684m²

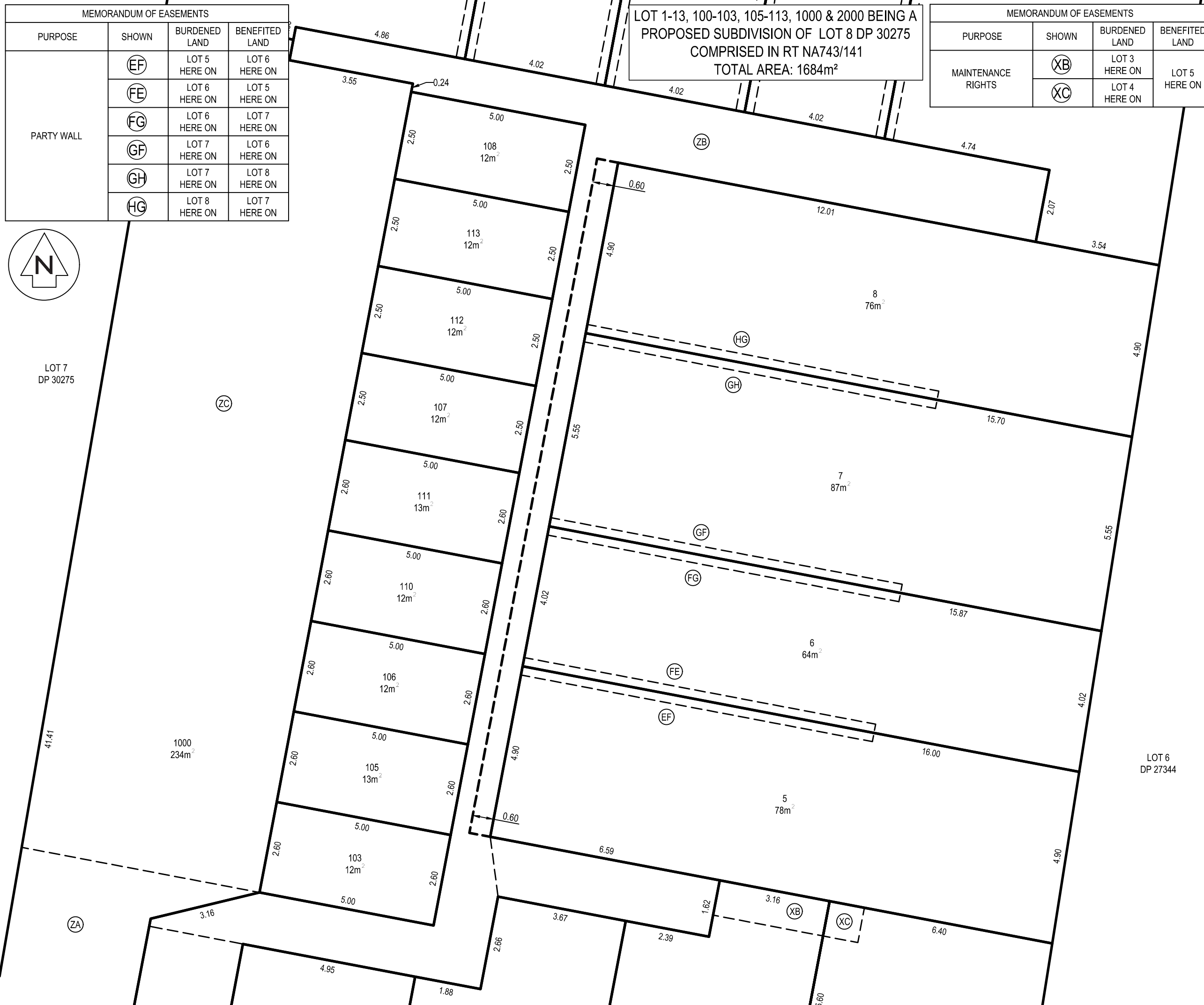
VENTNOR ROAD
(LEGAL ROAD)

MEMORANDUM OF EASEMENTS			
PURPOSE	SHOWN	BURDENED LAND	BENEFITED LAND
PARTY WALL	(EF)	LOT 5 HERE ON	LOT 6 HERE ON
	(FE)	LOT 6 HERE ON	LOT 5 HERE ON
	(FG)	LOT 6 HERE ON	LOT 7 HERE ON
	(GF)	LOT 7 HERE ON	LOT 6 HERE ON
	(GH)	LOT 7 HERE ON	LOT 8 HERE ON
	(HG)	LOT 8 HERE ON	LOT 7 HERE ON

LOT 1-13, 100-103, 105-113, 1000 & 2000 BEING A
 PROPOSED SUBDIVISION OF LOT 8 DP 30275
 COMPRISED IN RT NA743/141
 TOTAL AREA: 1684m²

MEMORANDUM OF EASEMENTS			
PURPOSE	SHOWN	BURDENED LAND	BENEFITED LAND
MAINTENANCE RIGHTS	(XB)	LOT 3 HERE ON	LOT 5 HERE ON
	(XC)	LOT 4 HERE ON	

- Notes
- All works to be in accordance with Auckland council standards.
 - Co-ordinates in terms of NZ Geodetic Datum Mt Eden 2000
 - Levels in terms of the Auckland Vertical Datum 1946.
 - Origin of Levels = M 969 SO 48339 (CD4K) Published RL=43.14, sourced from The LINZ Digital Geodetic Database.
 - Boundaries are subject to final survey.



Legend

	PROP BOUNDARY
	PROP EASEMENT
	ABUTTALS

Rev	Description	By	Date
A	INITIAL ISSUE	RM	11/2020

M **Maven Associates**
 09 571 0050
 info@maven.co.nz
 www.maven.co.nz
 12-14 Walls Road, Penrose

Project
**DEVELOPMENT OF
 44 VENTNOR ROAD
 REMUERA ROAD
 FOR
 GIBBONS CO.**

Title
**PROPOSED
 SCHEME
 PLAN**

Project no.	109012
Scale	1:100 @ A3
Cad file	C150 SCHEME.DWG
Drawing no.	C152
Rev	A



LOT 1-13, 100-103, 105-113, 1000 & 2000 BEING A
 PROPOSED SUBDIVISION OF LOT 8 DP 30275
 COMPRISED IN RT NA743/141
 TOTAL AREA: 1684m²

LOT 8
 DP 193345

MEMORANDUM OF EASEMENTS			
PURPOSE	SHOWN	BURDENED LAND	BENEFITED LAND
PARTY WALL	(IJ)	LOT 9 HERE ON	LOT 10 HERE ON
	(JI)	LOT 10 HERE ON	LOT 9 HERE ON
	(JK)	LOT 10 HERE ON	LOT 11 HERE ON
	(KJ)	LOT 11 HERE ON	LOT 10 HERE ON

MEMORANDUM OF EASEMENTS			
PURPOSE	SHOWN	BURDENED LAND	BENEFITED LAND
PARTY WALL	(KL)	LOT 11 HERE ON	LOT 12 HERE ON
	(LK)	LOT 12 HERE ON	LOT 11 HERE ON
	(LM)	LOT 12 HERE ON	LOT 13 HERE ON
	(ML)	LOT 13 HERE ON	LOT 12 HERE ON

Notes

- All works to be in accordance with Auckland council standards.
- Co-ordinates in terms of NZ Geodetic Datum Mt Eden 2000
- Levels in terms of the Auckland Vertical Datum 1946.
- Origin of Levels = M 969 SO 48339 (CD4K) Published RL=43.14, sourced from The LINZ Digital Geodetic Database.
- Boundaries are subject to final survey.

Legend

- PROP BOUNDARY
- PROP EASEMENT
- ABUTTALS

LOT 7
 DP 30275

9
 139m²

10
 65m²

11
 65m²

12
 65m²

13
 137m²

LOT 6
 DP 27344

(IJ) (JI)

(JK) (KJ)

(KL) (LK)

(LM) (ML)

(ZB)

(ZC)

112

8
 76m²

Rev	Description	By	Date
A	INITIAL ISSUE	RM	11/2020

M **Maven Associates**
 09 571 0050
 info@maven.co.nz
 www.maven.co.nz
 12-14 Walls Road, Penrose

Project
**DEVELOPMENT OF
 44 VENTNOR ROAD
 REMUERA ROAD
 FOR
 GIBBONS CO.**

Title
**PROPOSED
 SCHEME
 PLAN**

Project no.	109012
Scale	1:100 @ A3
Cad file	C150 SCHEME.DWG
Drawing no.	C153
Rev	A